

Via Coletora - Avenida Artur Machado

Luminária: 60 w
Altura: 7 m
Distância entre Postes: 17 m
Via: 7 m
Calçada: 1,5 m
Braço: 2 m
Inclinação - 15 graus.

Rua/Av.: Av. Artur Machado
Classificação de Via/Lux: V3 / 15 lx
Classificação de Calçada/Lux: P2 / 10 lx

Date: 04.04.2015
Operator:

Operator
Telephone
Fax
e-Mail

Table of contents

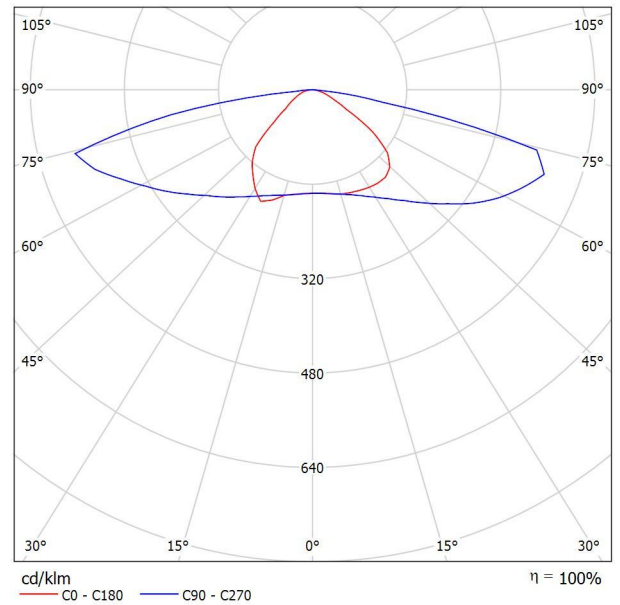
Via Coletora - Avenida Artur Machado	
Project Cover	1
Table of contents	2
Luminária 60W	
Luminaire Data Sheet	3
Luminaire Data Sheet	4
Projeto Luminotécnico	
Planning data	5
Photometric Results	6
3D Rendering	8
False Colour Rendering	9
Valuation Fields	
Via	
Value Chart (E)	10
Observer	
Observador 3	
Isolines (L)	11
Observador 4	
Isolines (L)	12
Calçada	
Value Chart (E)	13
Calçada	
Value Chart (E)	14

Operator
Telephone
Fax
e-Mail

Luminária 60W / Luminaire Data Sheet

See our luminaire catalog for an image of the luminaire.

Luminous emittance 1:



Luminaire classification according to CIE: 100
CIE flux code: 32 65 92 100 100

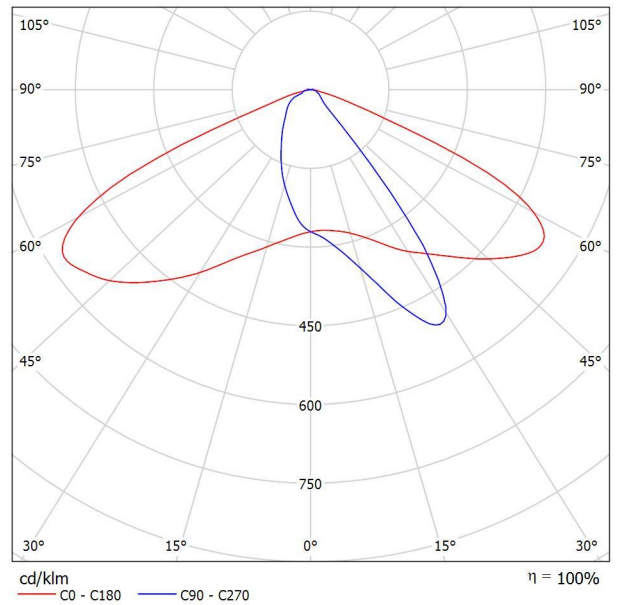
Due to missing symmetry properties, no UGR table can be displayed for this luminaire.

Operator
Telephone
Fax
e-Mail

Luminária 60W / Luminaire Data Sheet

See our luminaire catalog for an image of the luminaire.

Luminous emittance 1:



Luminaire classification according to CIE: 100
CIE flux code: 49 83 98 100 100

Due to missing symmetry properties, no UGR table can be displayed for this luminaire.

Operator
Telephone
Fax
e-Mail

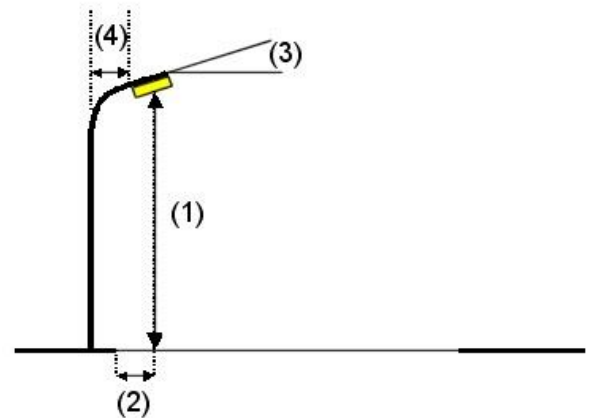
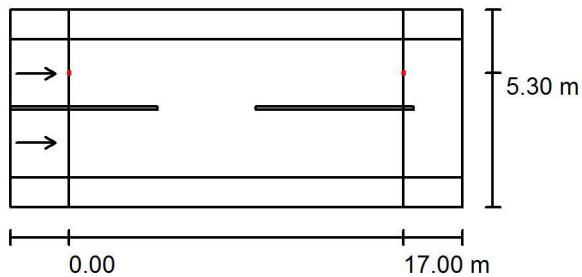
Projeto Luminotécnico / Planning data

Street Profile

Calçada (Width: 1.500 m)
Via (Width: 7.000 m, Number of lanes: 2, tarmac: R3, q0: 0.070)
Calçada (Width: 1.500 m)

Maintenance factor: 1.00

Luminaire Arrangements



Luminaire:	Luminária 60W
Luminous flux (Luminaire):	5664 lm
Luminous flux (Lamps):	5663 lm
Luminaire Wattage:	66.6 W
Arrangement:	Single row, top
Pole Distance:	17.000 m
Mounting Height (1):	7.000 m
Height:	6.900 m
Overhang (2):	1.700 m
Boom Angle (3):	0.0 °
Boom Length (4):	2.000 m

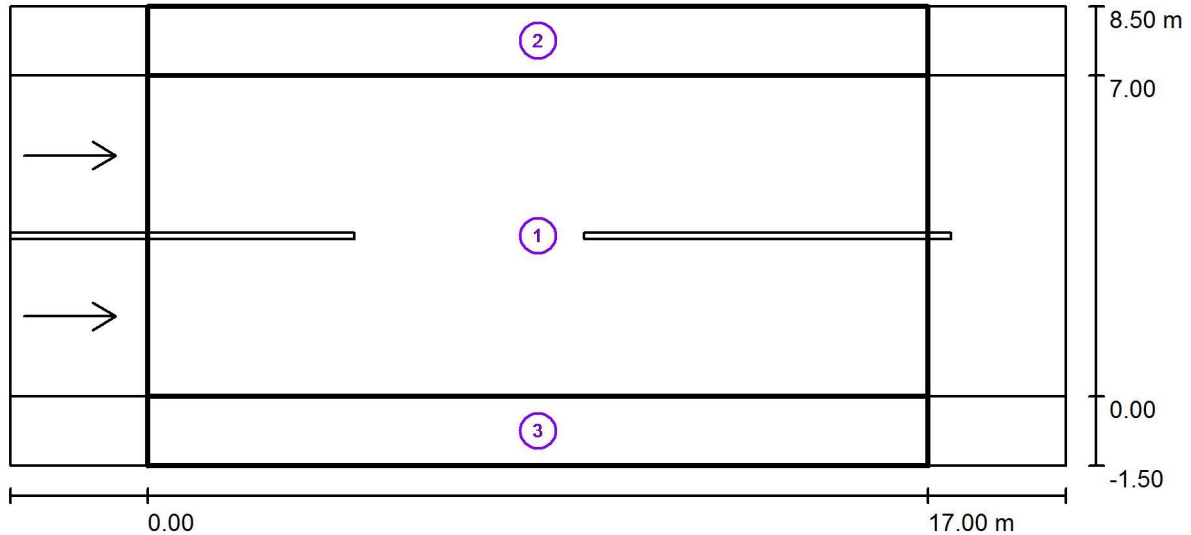
Maximum luminous intensities
at 70°: 508 cd/klm
at 80°: 790 cd/klm
at 90°: 124 cd/klm

Any direction forming the specified angle from the downward vertical, with the luminaire installed for use.

Arrangement complies with glare index class D.2.

Operator
Telephone
Fax
e-Mail

Projeto Luminotécnico / Photometric Results



Maintenance factor: 1.00

Scale 1:165

Calculation Field List

- 1 Via
 Length: 17.000 m, Width: 7.000 m
 Grid: 10 x 6 Points
 Accompanying Street Elements: Via.
 tarmac: R3, q0: 0.070
 Selected Lighting Class: ME4a

(Not all lighting performance requirements are met.)

	L_{av} [cd/m ²]	U0	UI	TI [%]	SR
Calculated values:	1.68	0.55	0.91	10	0.63
Required values according to class:	≥ 1.00	≥ 0.40	≥ 0.70	≤ 10	≥ 0.50
Fulfilled/Not fulfilled:	✓	✓	✓	✓	✓

Operator
Telephone
Fax
e-Mail

Projeto Luminotécnico / Photometric Results

Calculation Field List

2 Calçada

Length: 17.000 m, Width: 1.500 m
Grid: 10 x 3 Points
Accompanying Street Elements: Calçada.
Selected Lighting Class: CE5

(All lighting performance requirements are met.)

Calculated values:	E_{av} [lx]	U0
Required values according to class:	16.94	0.69
Fulfilled/Not fulfilled:	≥ 10.00	≥ 0.25
	✓	✓

3 Calçada

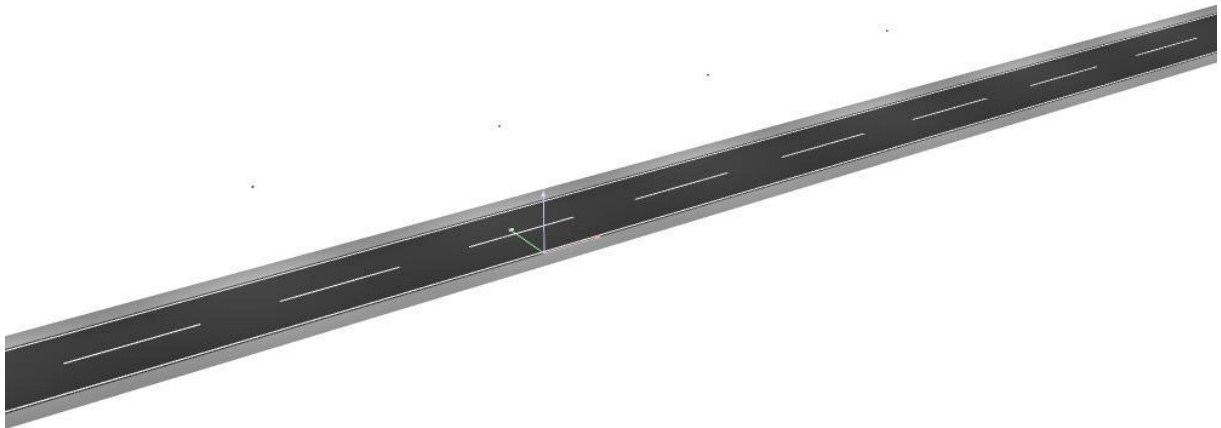
Length: 17.000 m, Width: 1.500 m
Grid: 10 x 3 Points
Accompanying Street Elements: Calçada.
Selected Lighting Class: CE5

(All lighting performance requirements are met.)

Calculated values:	E_{av} [lx]	U0
Required values according to class:	14.69	0.89
Fulfilled/Not fulfilled:	≥ 10.00	≥ 0.25
	✓	✓

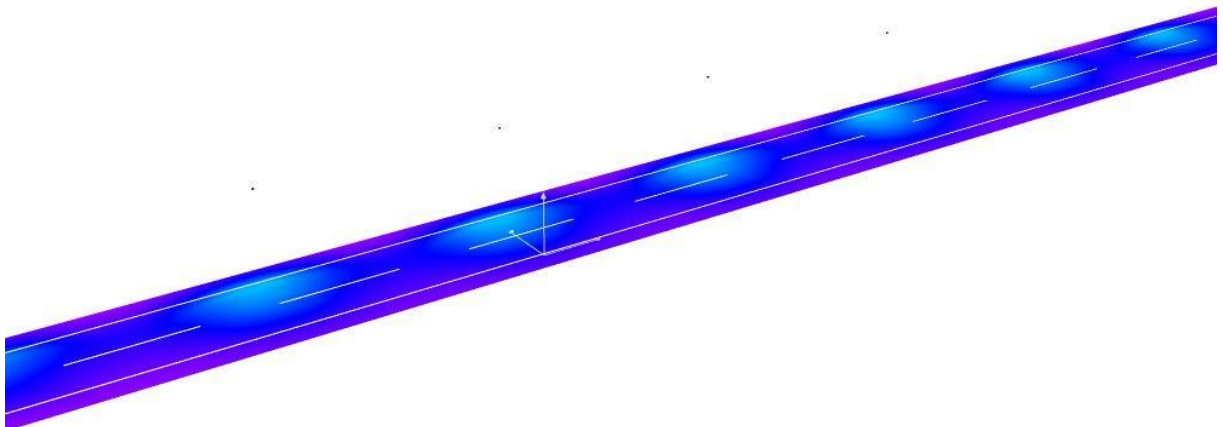
Operator
Telephone
Fax
e-Mail

Projeto Luminotécnico / 3D Rendering



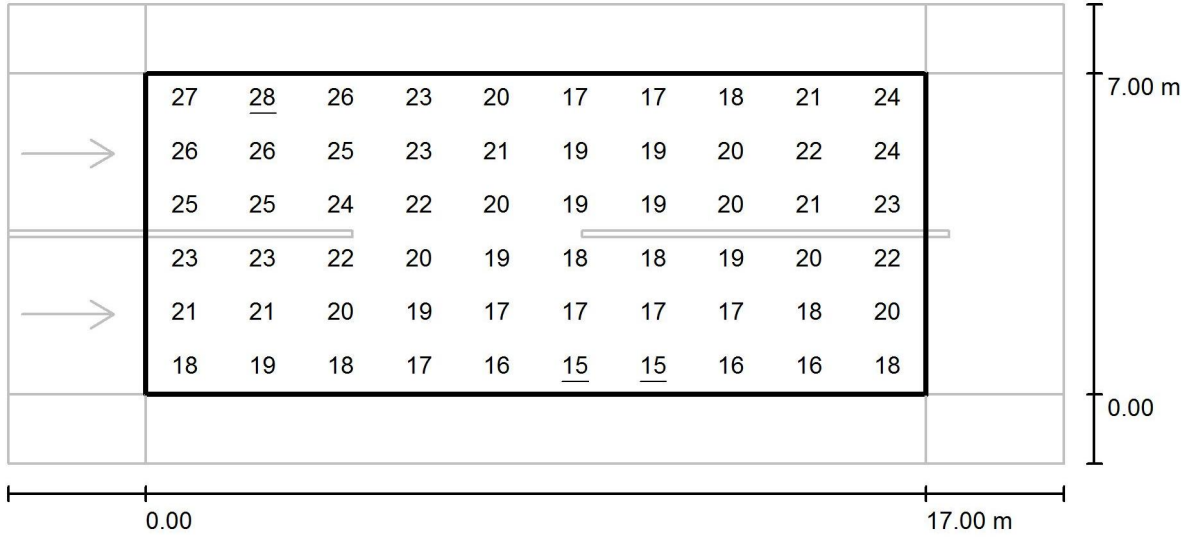
Operator
Telephone
Fax
e-Mail

Projeto Luminotécnico / False Colour Rendering



Operator
Telephone
Fax
e-Mail

Projeto Luminotécnico / Via / Value Chart (E)



Values in Lux, Scale 1 : 165

Grid: 10 x 6 Points

E_{av} [lx]
20

E_{min} [lx]
15

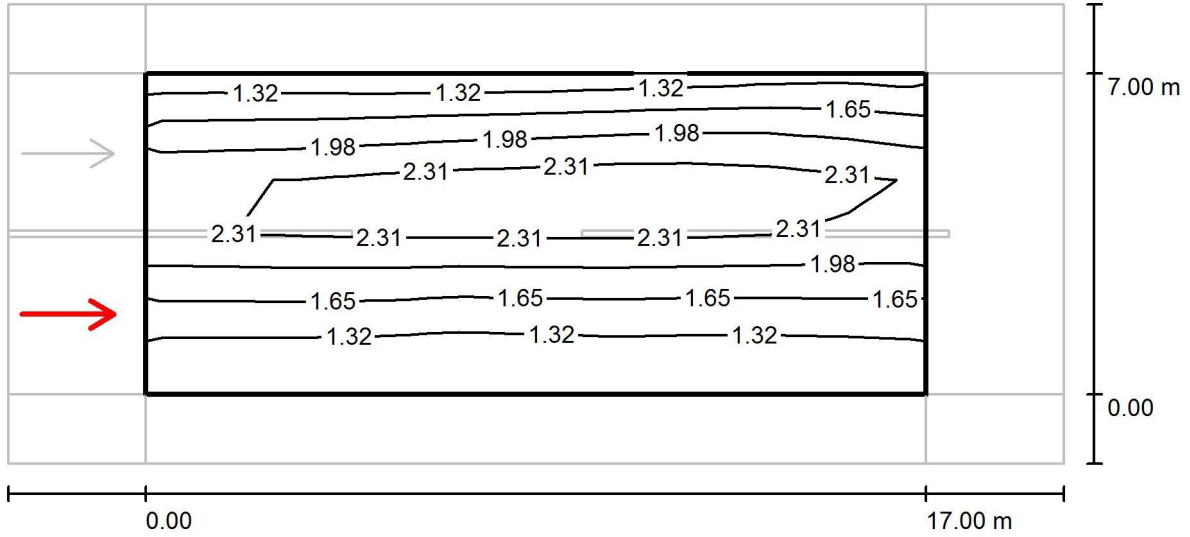
E_{max} [lx]
28

$u0$
0.749

E_{min} / E_{max}
0.553

Operator
Telephone
Fax
e-Mail

Projeto Luminotécnico / Via / Observador 3 / Isolines (L)



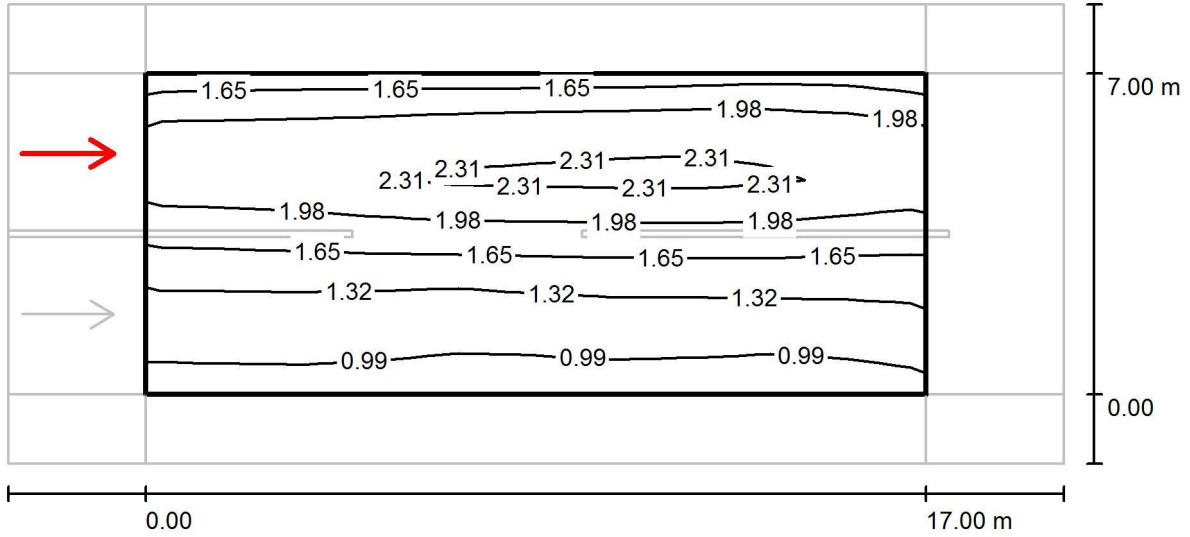
Values in Candela/m², Scale 1 : 165

Grid: 10 x 6 Points
Observer Position: (-60.000 m, 1.750 m, 1.500 m)
tarmac: R3, q0: 0.070

	L_{av} [cd/m ²]	U0	UI	TI [%]
Calculated values:	1.81	0.58	0.94	10
Required values according to class ME4a:	≥ 1.00	≥ 0.40	≥ 0.70	≤ 10
Fulfilled/Not fulfilled:	✓	✓	✓	✓

Operator
Telephone
Fax
e-Mail

Projeto Luminotécnico / Via / Observador 4 / Isolines (L)



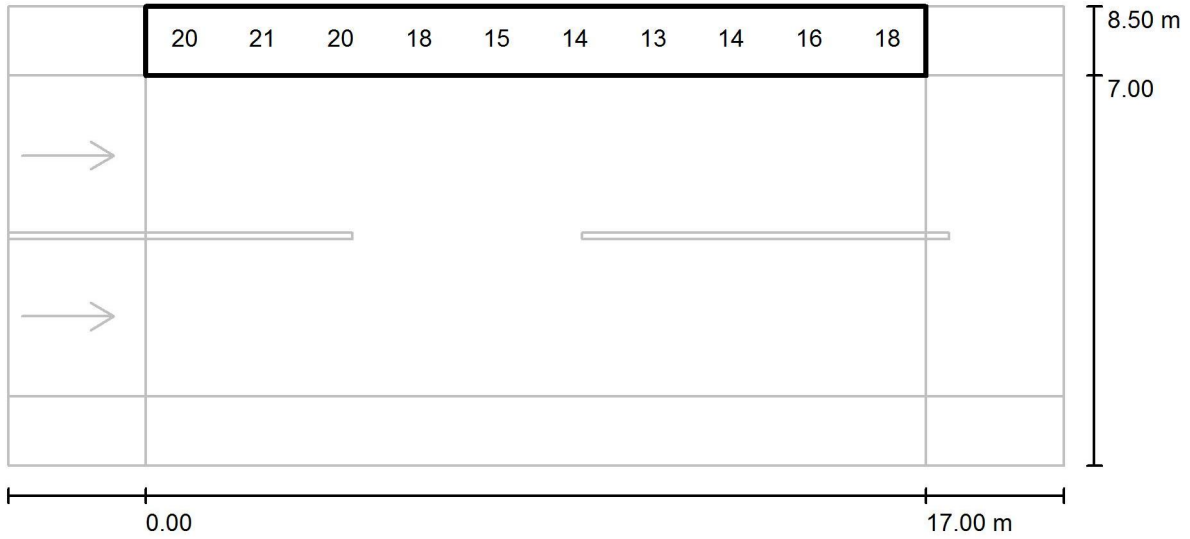
Values in Candela/m², Scale 1 : 165

Grid: 10 x 6 Points
Observer Position: (-60.000 m, 5.250 m, 1.500 m)
tarmac: R3, q0: 0.070

	L_{av} [cd/m ²]	U0	UI	TI [%]
Calculated values:	1.68	0.55	0.91	10
Required values according to class ME4a:	≥ 1.00	≥ 0.40	≥ 0.70	≤ 10
Fulfilled/Not fulfilled:	✓	✓	✓	✓

Operator
Telephone
Fax
e-Mail

Projeto Luminotécnico / Calçada / Value Chart (E)



Values in Lux, Scale 1 : 165

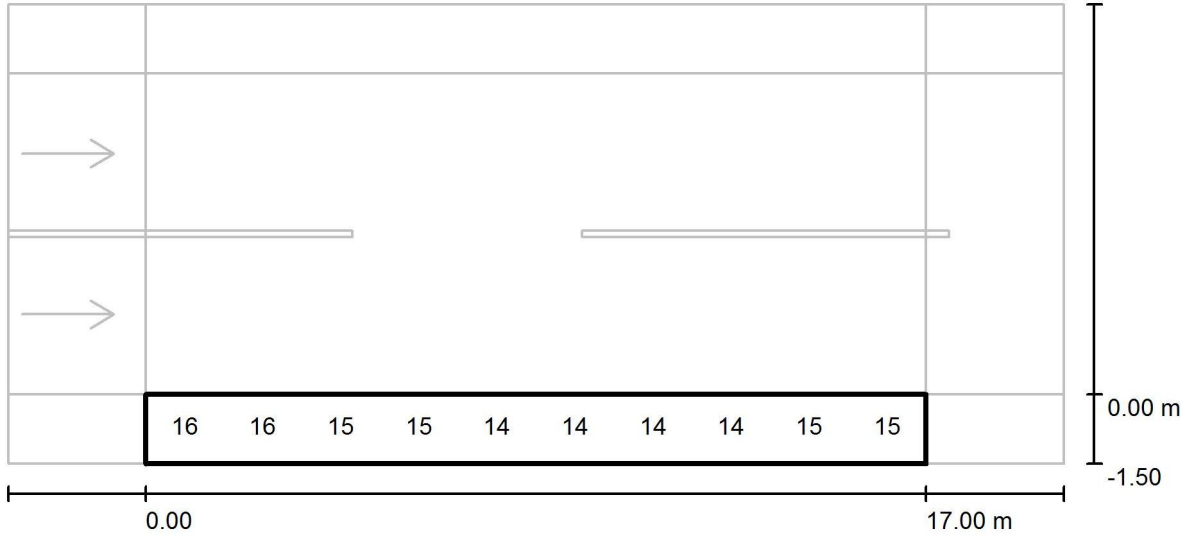
Not all calculated values could be displayed.

Grid: 10 x 3 Points

E_{av} [lx]	E_{min} [lx]	E_{max} [lx]	u0	E_{min} / E_{max}
17	12	24	0.694	0.500

Operator
Telephone
Fax
e-Mail

Projeto Luminotécnico / Calçada / Value Chart (E)



Values in Lux, Scale 1 : 165

Not all calculated values could be displayed.

Grid: 10 x 3 Points

E_{av} [lx]	E_{min} [lx]	E_{max} [lx]	u0	E_{min} / E_{max}
15	13	17	0.894	0.788